

S1=S2=S4=S5=S6=S7=S8=S9=S11=S13=S14=S15  
 =S16=S17=S18=S19=S20=S21=S23=S24=S25  
 =S26=S27  
 PLANTA  
 ESC 1:25

CORTE  
 ESC 1:25

S3=S22  
 PLANTA  
 ESC 1:25

CORTE  
 ESC 1:25

Relação do aço

AÇO	N	DIAM	Q	UNIT	C.TOTAL	
		(cm)		(cm)	(cm)	
CA60	1	5.0	600	68	40800	
	2	5.0	4	305	1220	
	3	5.0	6	313	1878	
	4	5.0	861	88	75768	
	5	5.0	2	385	770	
	6	5.0	4	260	1040	
	CA50	7	6.3	184	89	16376
		8	6.3	138	99	13662
		9	6.3	16	84	1504
		10	6.3	14	104	1456
		11	8.0	4	1063	4252
		12	8.0	4	966	3864
13		8.0	8	498	3984	
14		8.0	4	436	1744	
15		8.0	2	988	1976	
16		8.0	2	326	652	
17		8.0	2	403	806	
18		8.0	4	114	456	
19	8.0	2	139	278		
20	8.0	2	130	260		
21	8.0	2	259	518		
22	8.0	2	293	586		
23	8.0	1	146	146		
24	8.0	14	714	9696		
25	8.0	8	766	6128		
26	8.0	4	201	804		
27	8.0	4	131	524		
28	8.0	4	396	1584		
29	10.0	60	VAR	VAR		
30	10.0	44	VAR	VAR		

Resumo do aço

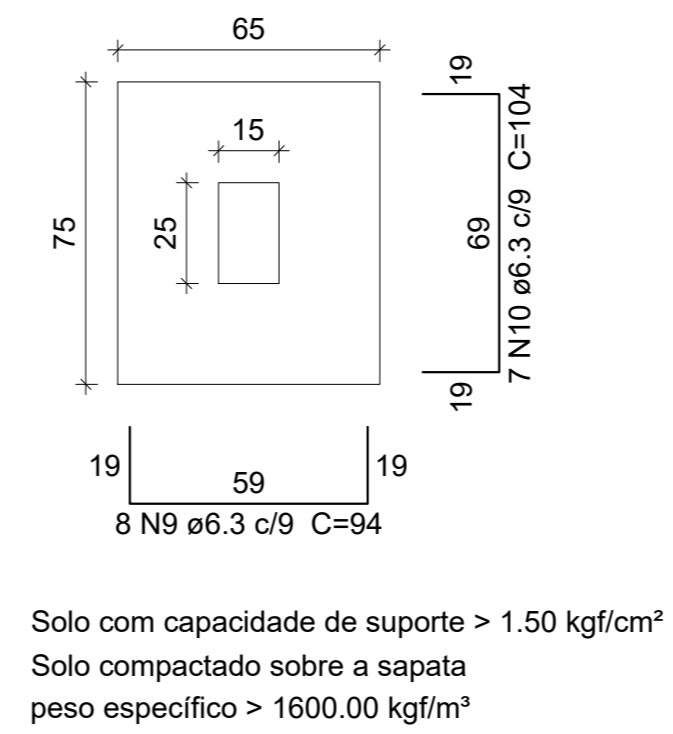
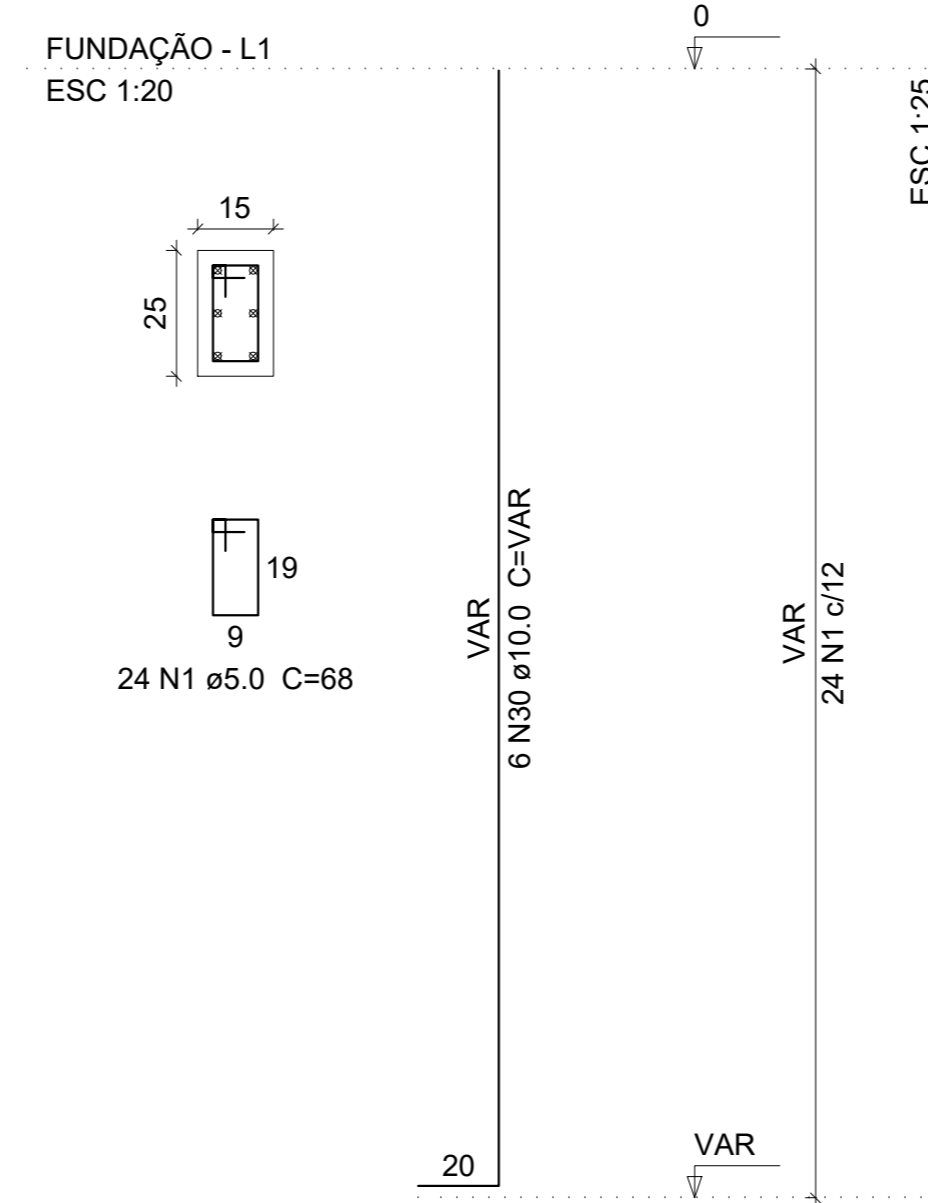
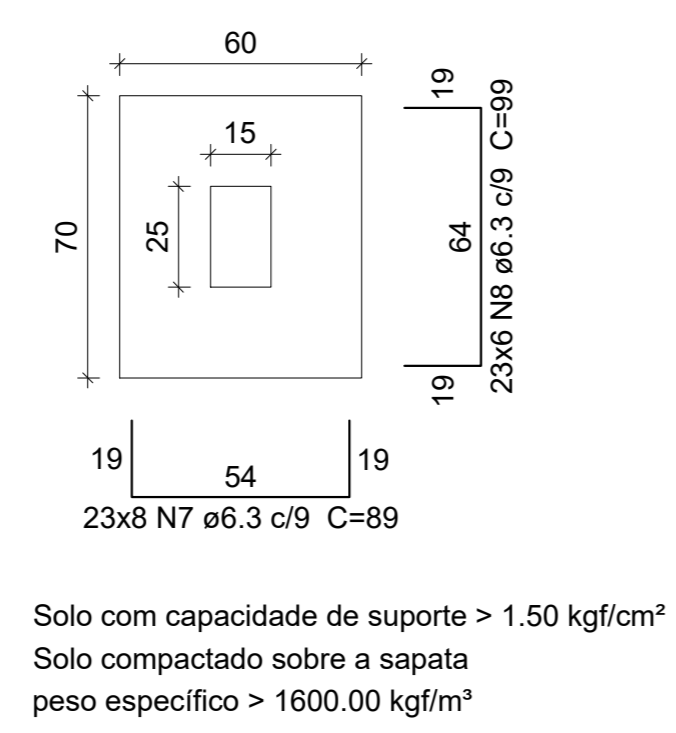
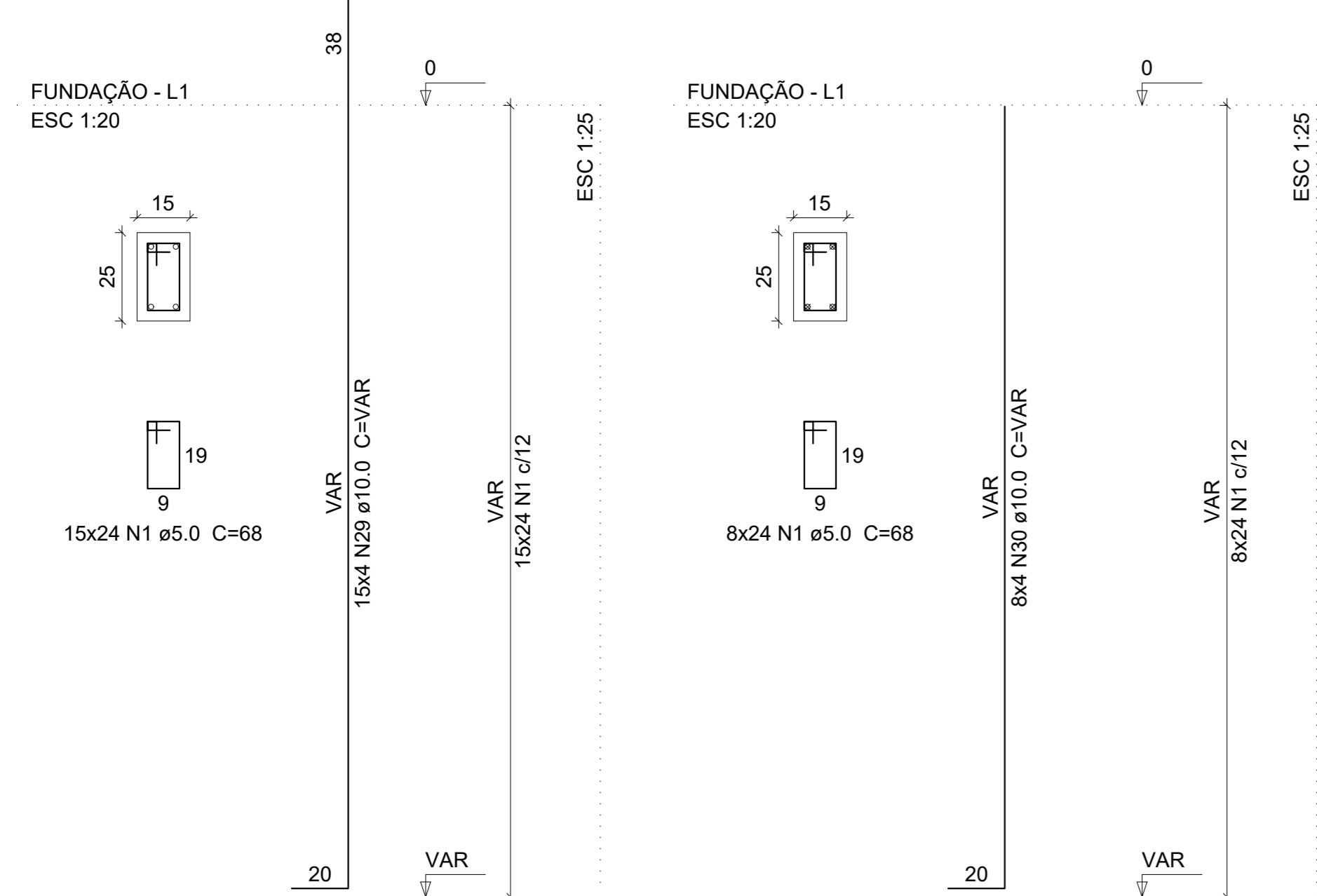
AÇO	DIAM	C.TOTAL	PESO + 10 %
	(m)	(kg)	(kg)
CA50	6.3	330	88.8
	8.0	385.6	167.4
	10.0	331.4	224.8
CA60	5.0	1214.8	206
<b>PESO TOTAL</b>			
CA50	480.9		
CA60	206		

Vol. de concreto total (C-25) = 11.87 m³  
 Área de forma total = 151.39 m²

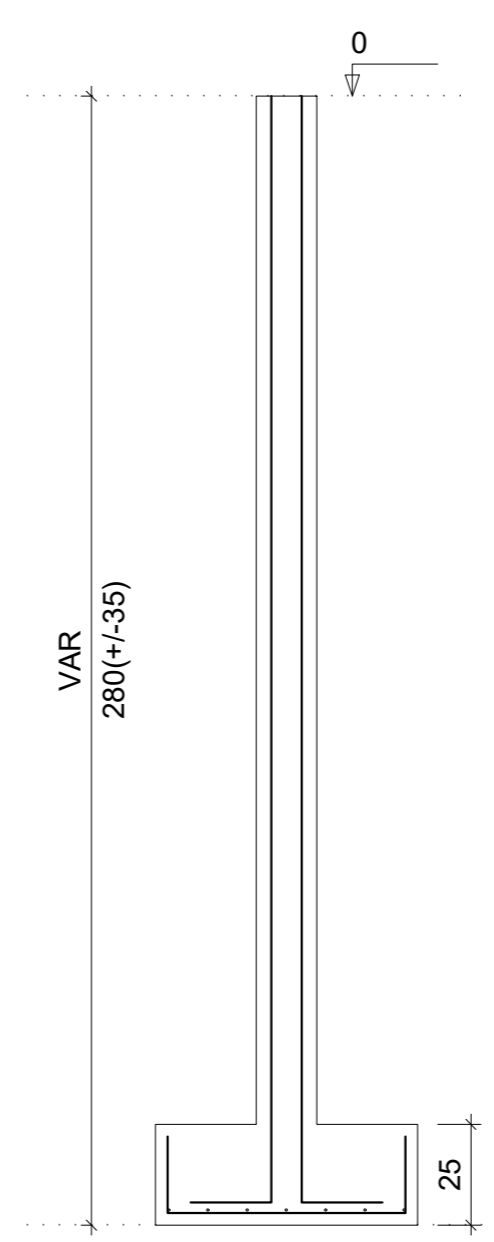
P1=P2=P4=P5=P7=P8=P14=P15=P16=P17=P19  
 =P20=P21=P26=P27

P6=P9=P11=P13=P18=P23=P24=P25

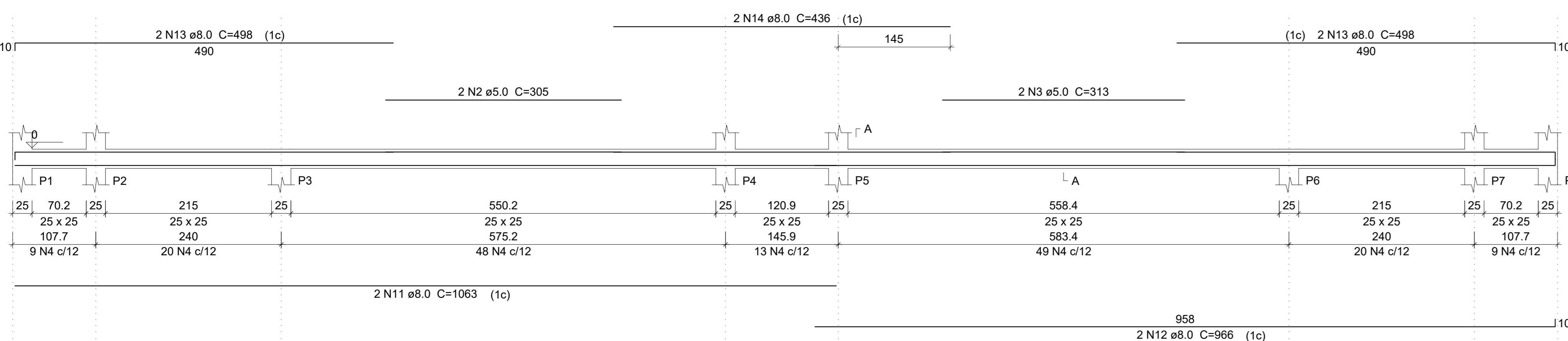
P3=P22



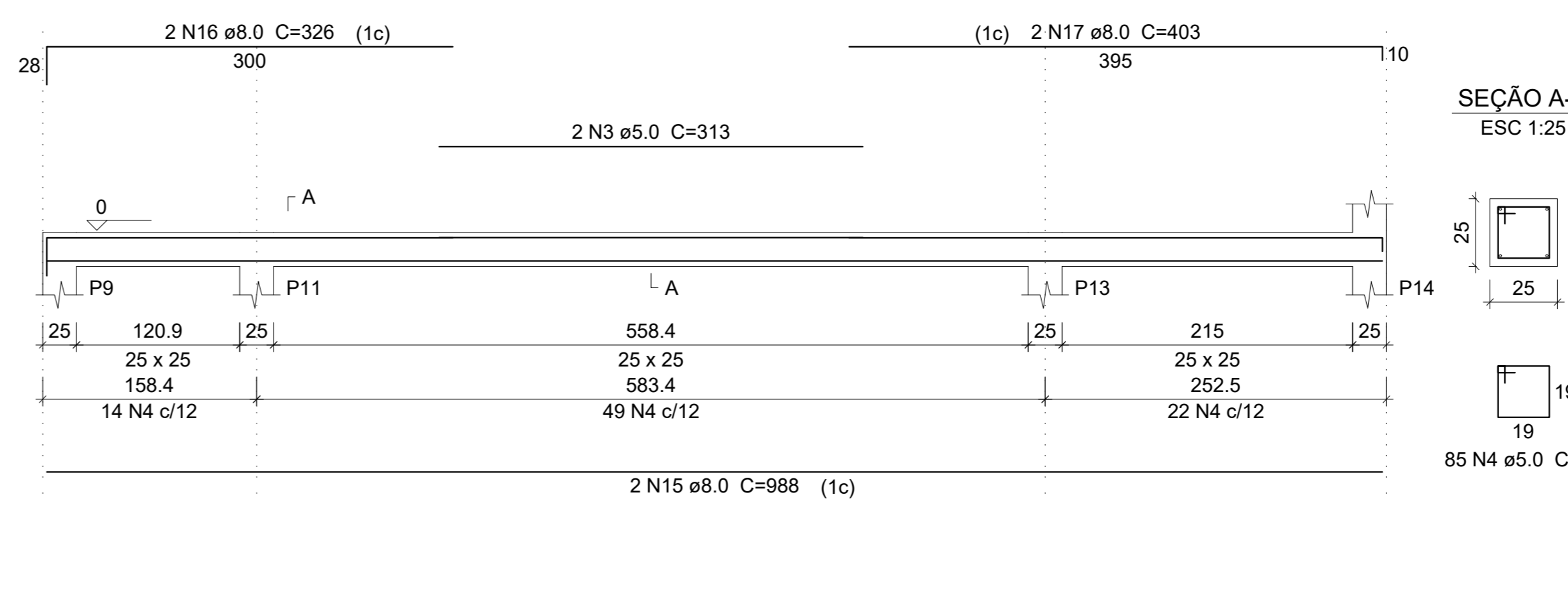
Solo com capacidade de suporte > 1.50 kgf/cm²  
 Solo compactado sobre a sapata  
 peso específico > 1600.00 kgfm³



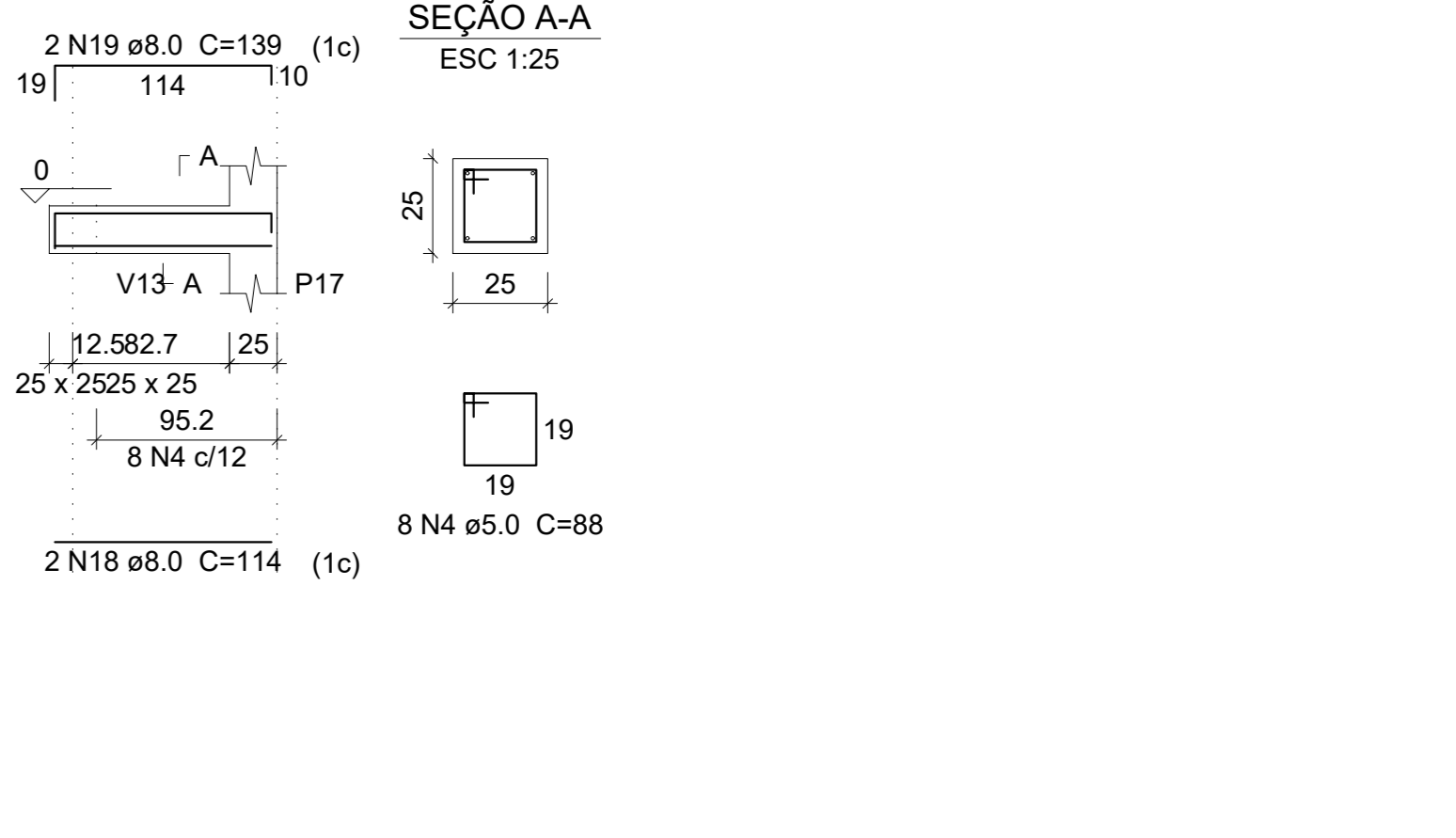
V1  
 ESC 1:50



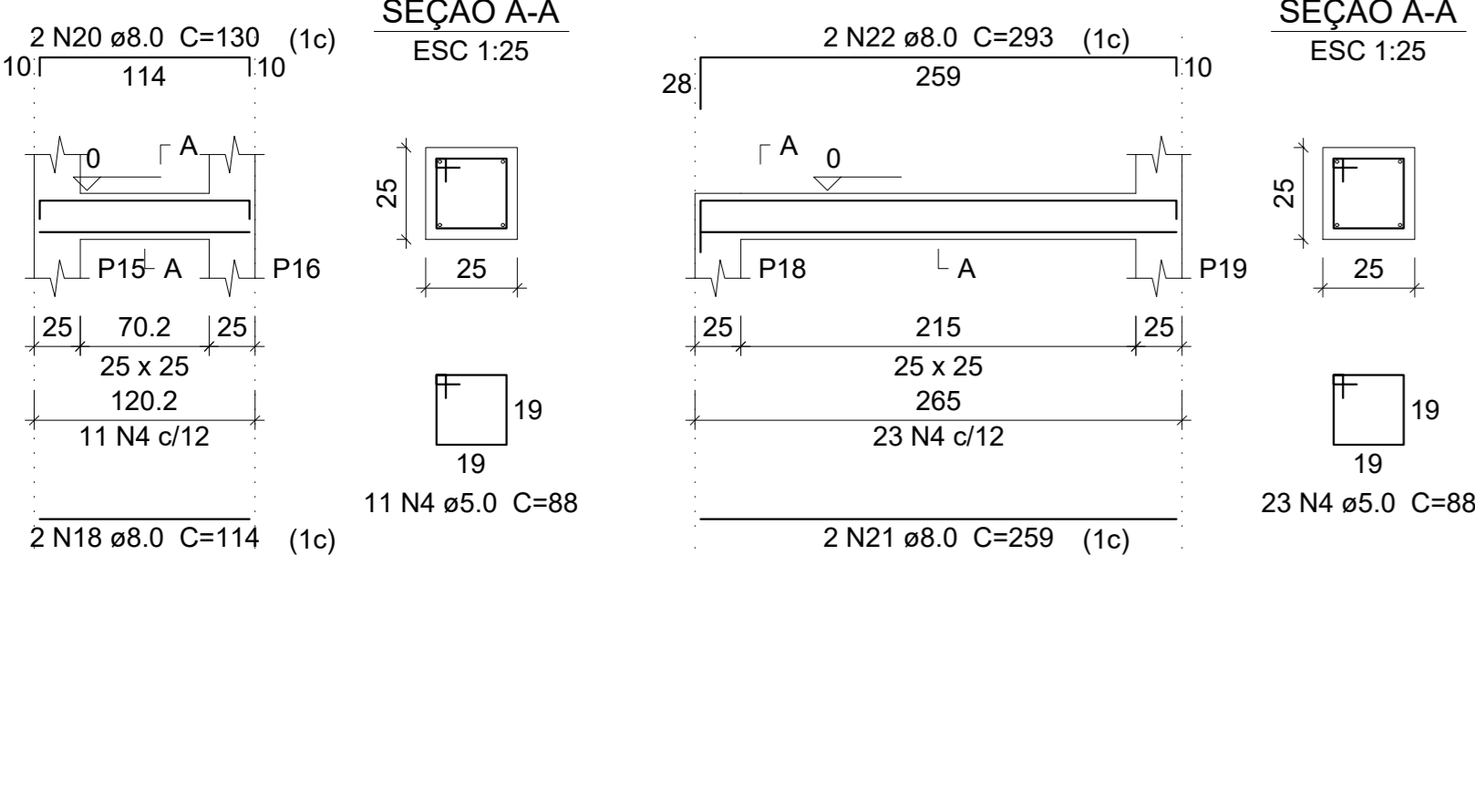
V2  
 ESC 1:50



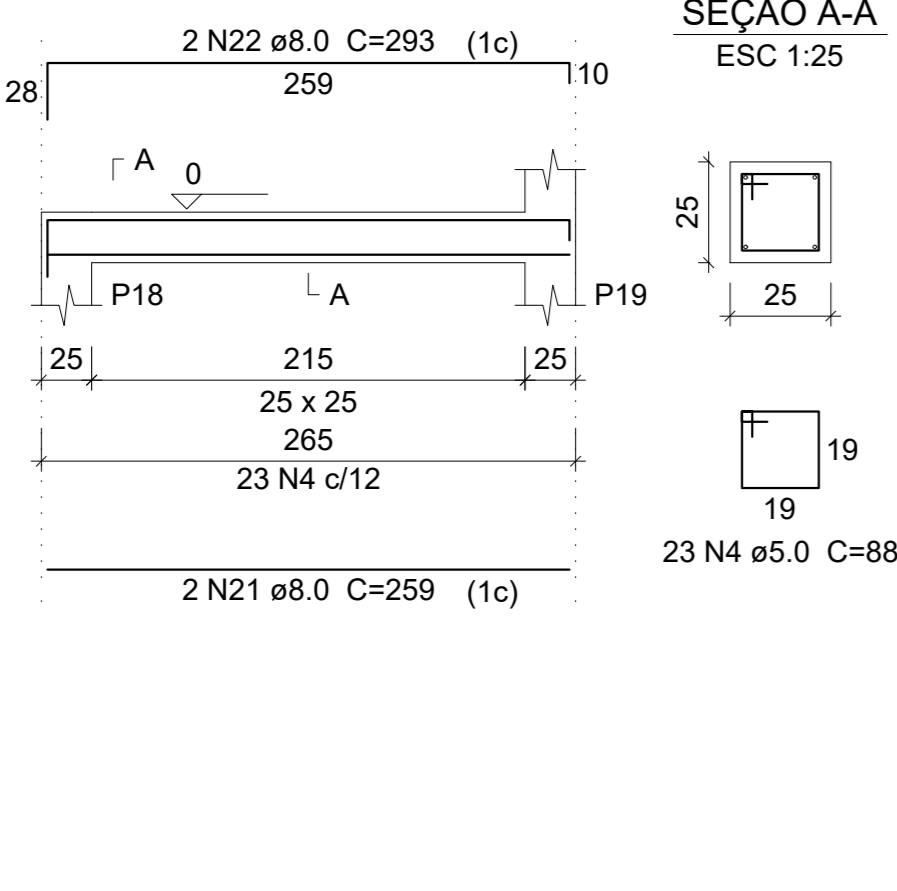
V3  
 ESC 1:50



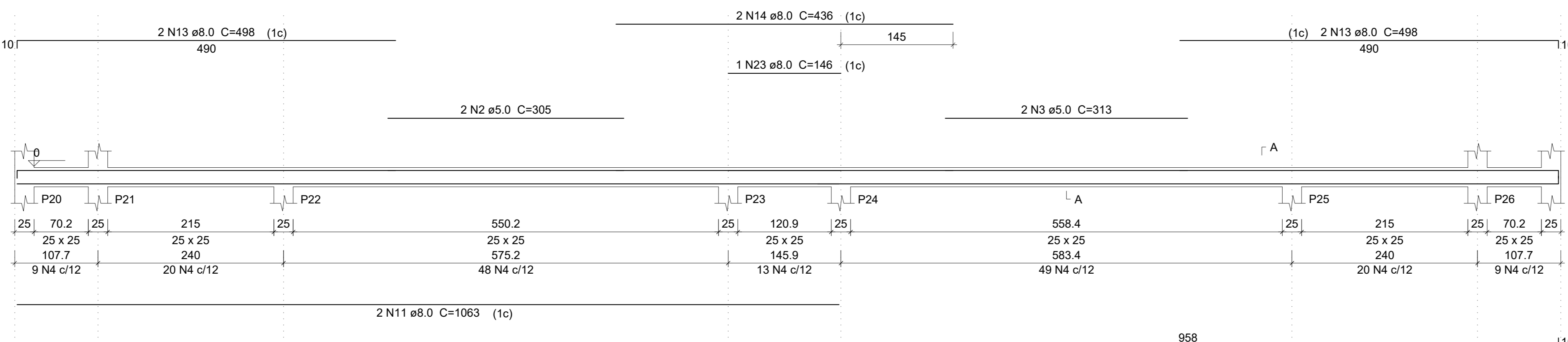
V4  
 ESC 1:50



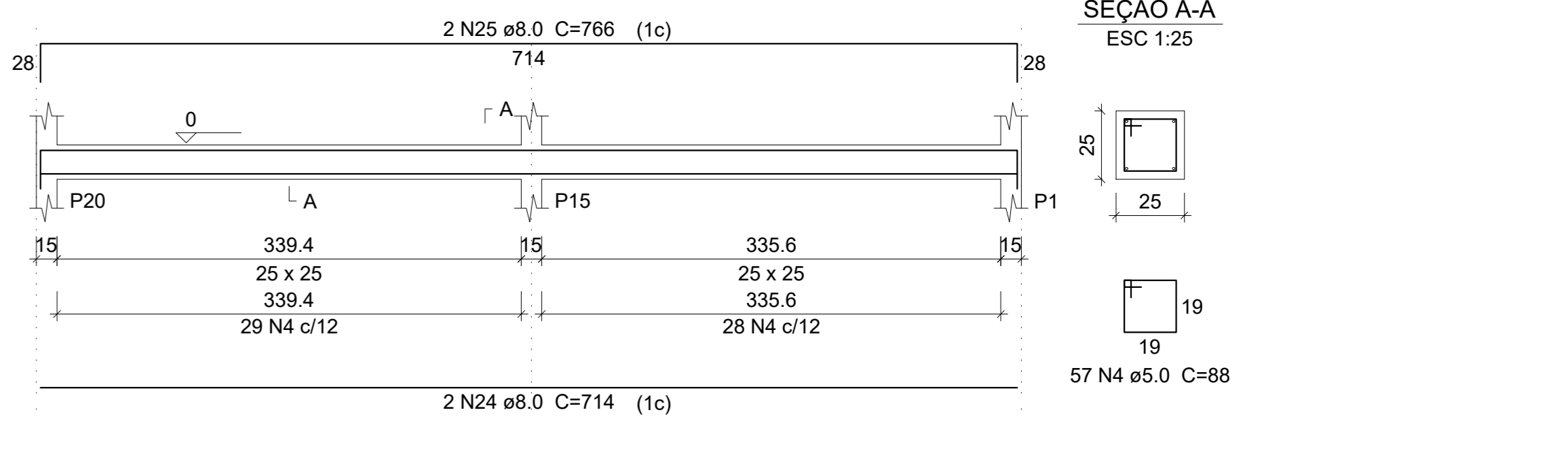
V5  
 ESC 1:50



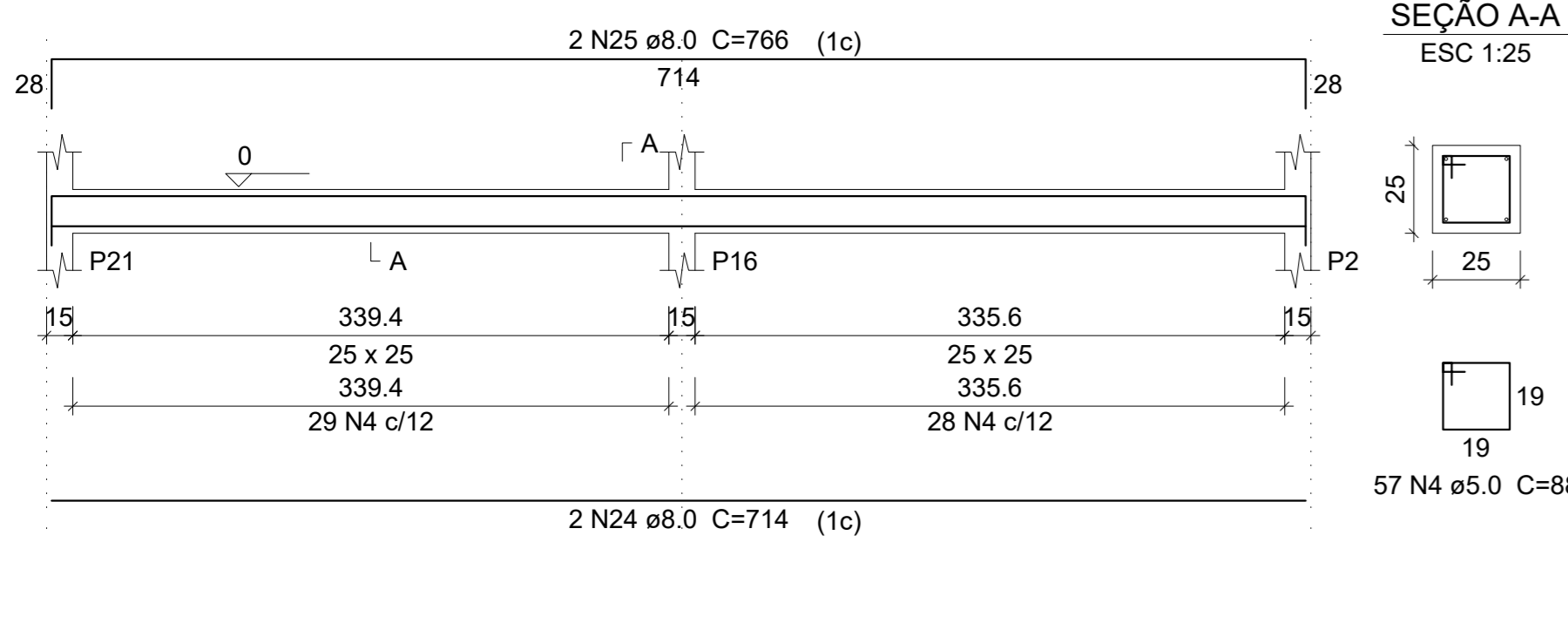
V6  
 ESC 1:50



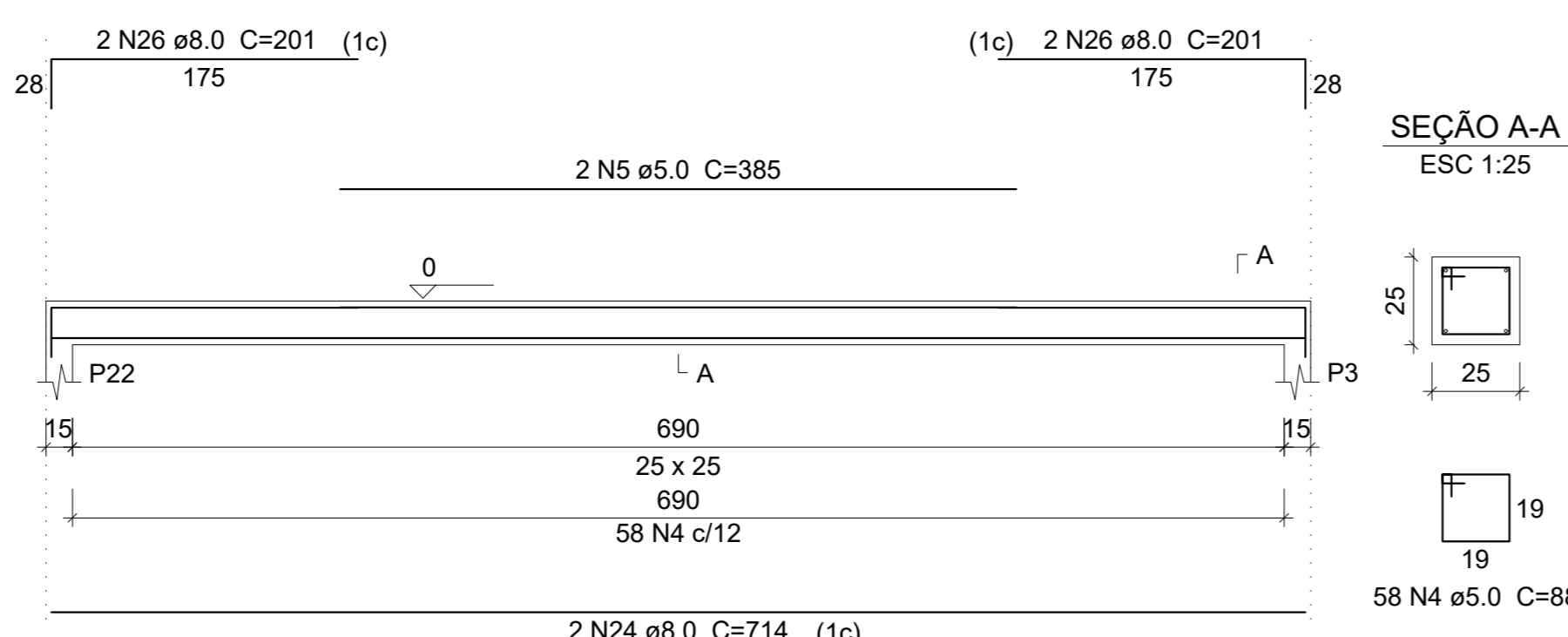
V7  
 ESC 1:50



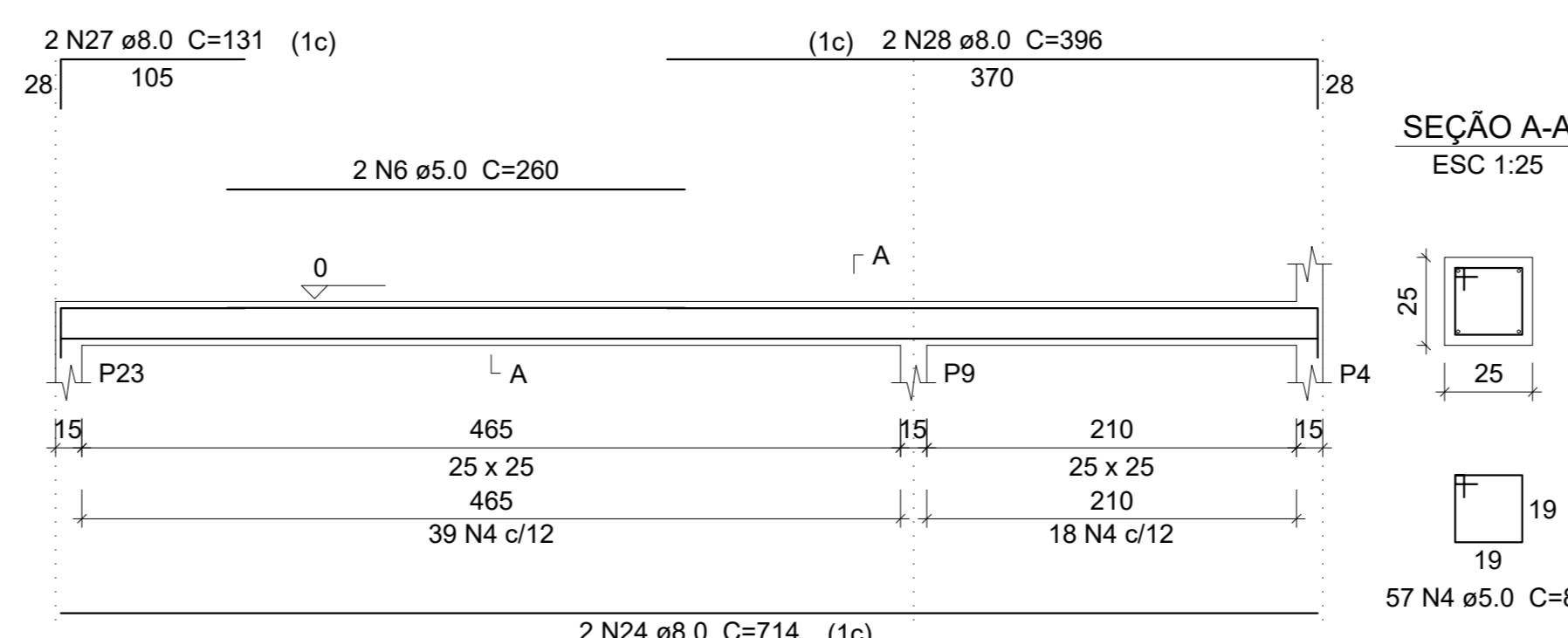
V8  
 ESC 1:50



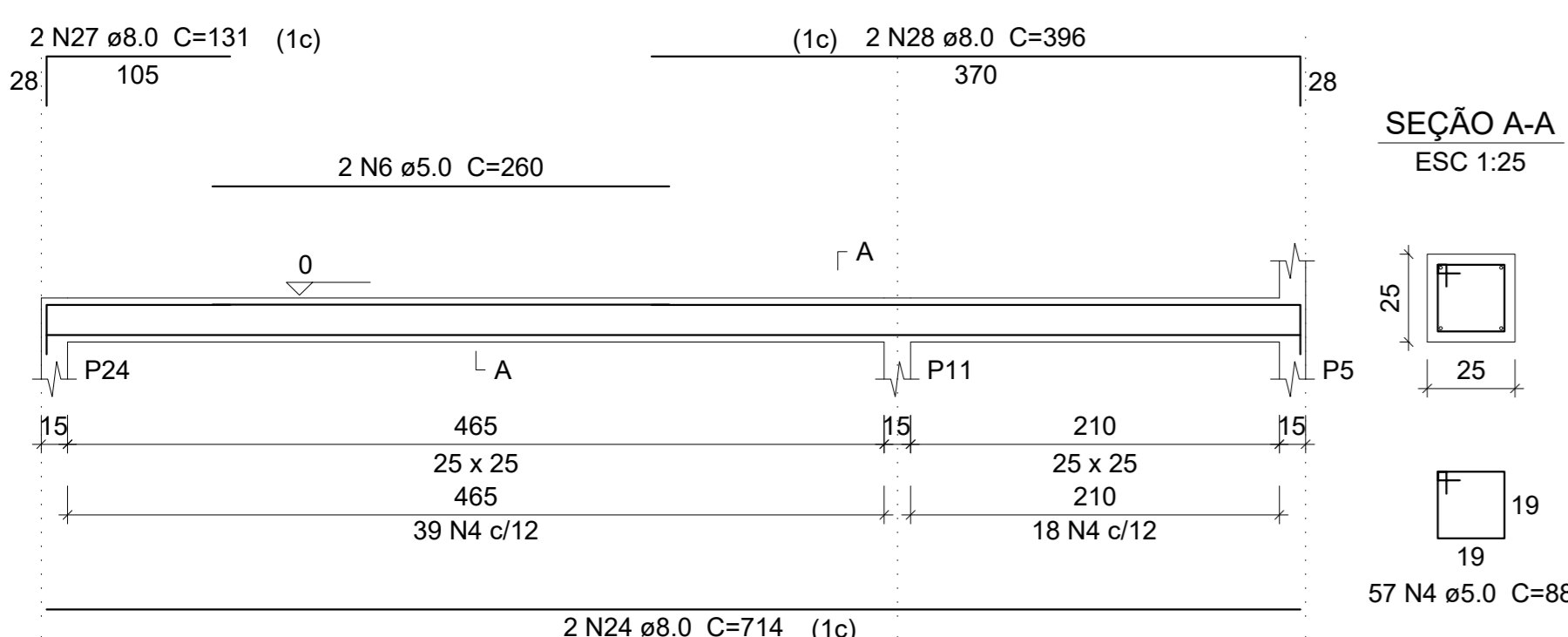
V9  
 ESC 1:50



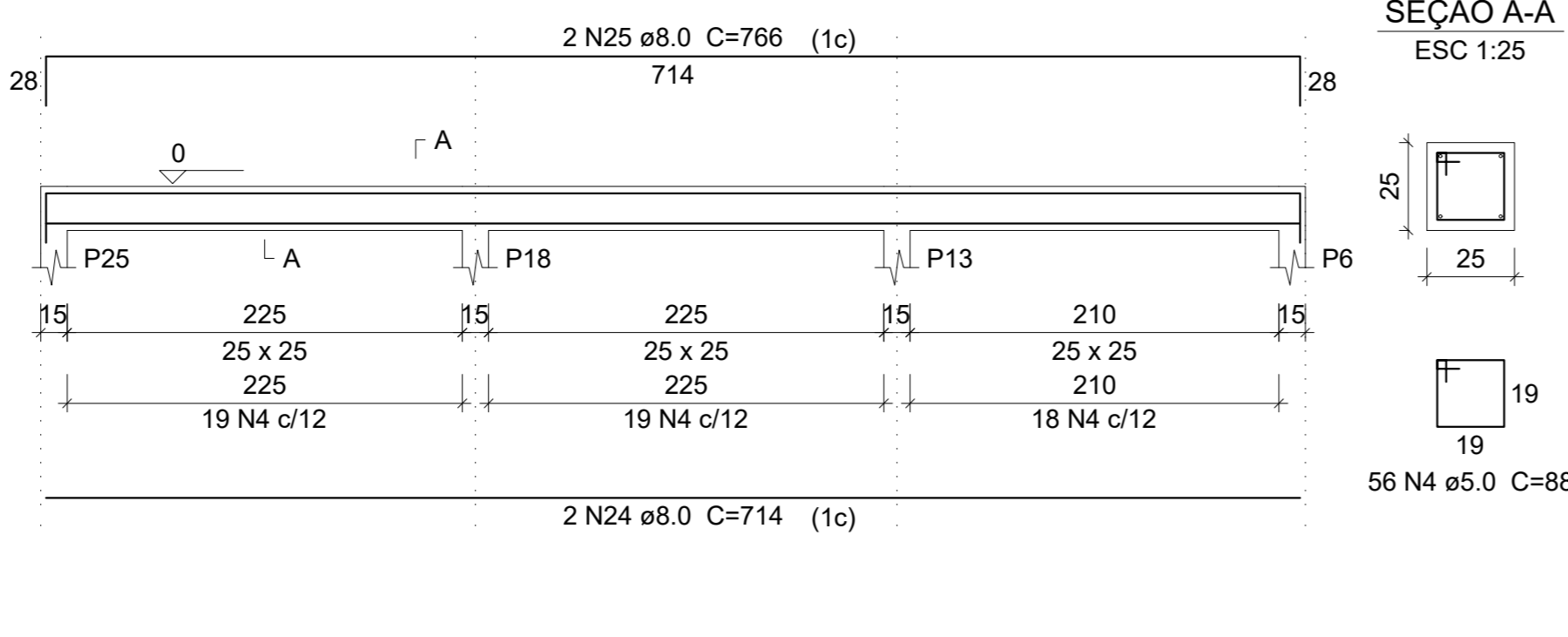
V10  
 ESC 1:50



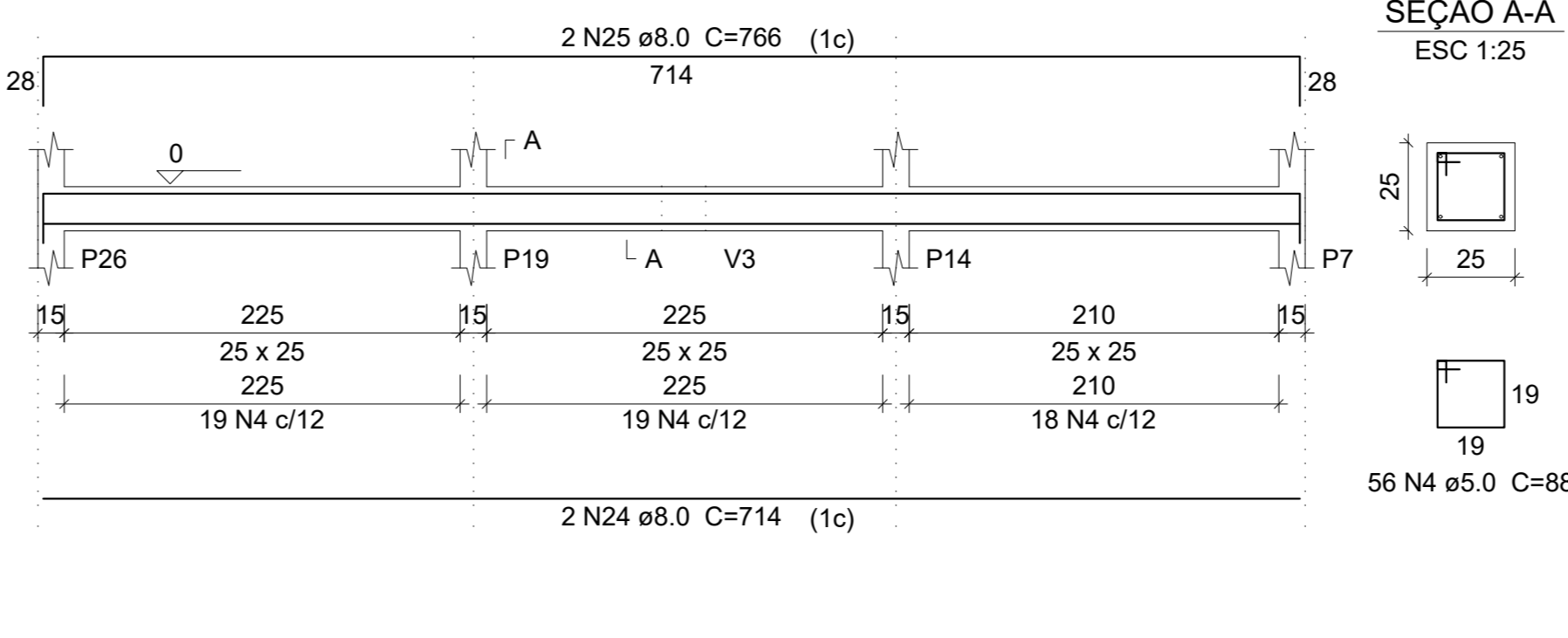
V11  
 ESC 1:50



V12  
 ESC 1:50



V13  
 ESC 1:50



**PROJETO**  
**PROJETO ESTRUTURAL - PISTA DE SKATE**

**OBRA**  
 Praça Estrutural - Pista de Skate

**LOCAL**  
 Avenida Presidente Tancredo de Almeida Neves, N°220, Bairro Novo Horizonte

**PROPRIETÁRIO**  
 Prefeitura Municipal de Luminárias - CNPJ: 18.244.301/0001-26

**RESPONSÁVEL TÉCNICO**  
 Adalgiane Souza Monteiro - CREA/MG: 204995-D

**ÁREA** 144,00 m²      **DATA** 11/04/2024      **ESCALA** INDICADA      **FOLHA** 04/04